



SCANFLEX II Designer Studio

Your entry into Embedded JTAG Solutions

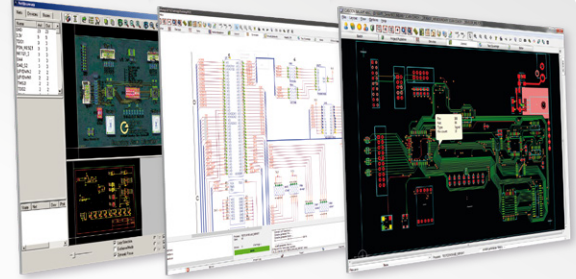


- complete hardware and software package for IEEE 1149.x testing
- graphical project development with Mission Assist™
- automatic test generation and pin error diagnosis
- debugging of BGA pins and embedded signal networks
- ideal for design verification and production testing



Embedded JTAG Solutions / Boundary Scan 1149.x plus

- tests implemented using on-chip electronics in combination with a four-wire bus (JTAG) replace the need for physical access with needles and probes
- reduction of test points, saving time, money and improving process reliability
- stand-alone solution in development and for reuse on production ATE platforms in fully integrated test packages
- SCANFLEX II Designer Studio is a cost-effective entry-level solution with many valuable features for powerful and convenient test program creation and execution



Hardware and Software components

- SCANFLEX II CUBE (USB or LAN)
- SYSTEM CASCON™ platform licence
- Mission Assist™ for graphic project development
- automatic test generation & diagnosis
- Scan Assist™: interactive pin toggler & debugger
- programming of PLDs and moderate Flash*
- graphical Test Coverage Analyser (TCA)*
- one-year maintenance contract
- Flash programming capability**

* available from standard version
** optional



SCANFLEX II Designer Studio

Your entry into Embedded
JTAG Solutions

Extensibility

- optional TIC modules (e.g. for greater distances to the test object)
- CION LX I/O modules (e.g. for testing external and non scan signals)
- additional Automatic Test Program Generator (ATPG) functions (e.g. for cluster tests)
- visualization for layout and schematic (Scan Vision™)

🇩🇪 Made in Germany



Enjoy Testing

ISO 9001 certified

🇩🇪 GÖPEL electronic GmbH

Goeschwitzer Str. 58/60
07745 Jena · Germany

+49 3641 · 6896 0 Phone
+49 3641 · 6896 944 Fax

✉ ejs.sales@goepel.com
🌐 www.goepel.com

🇬🇧 ejs.sales@goepel.co.uk

🇺🇸 ejs.sales@goepelusa.com

🇮🇳 ejs.sales@goepel.asia

🇮🇩 ejs.sales@goepel.in

