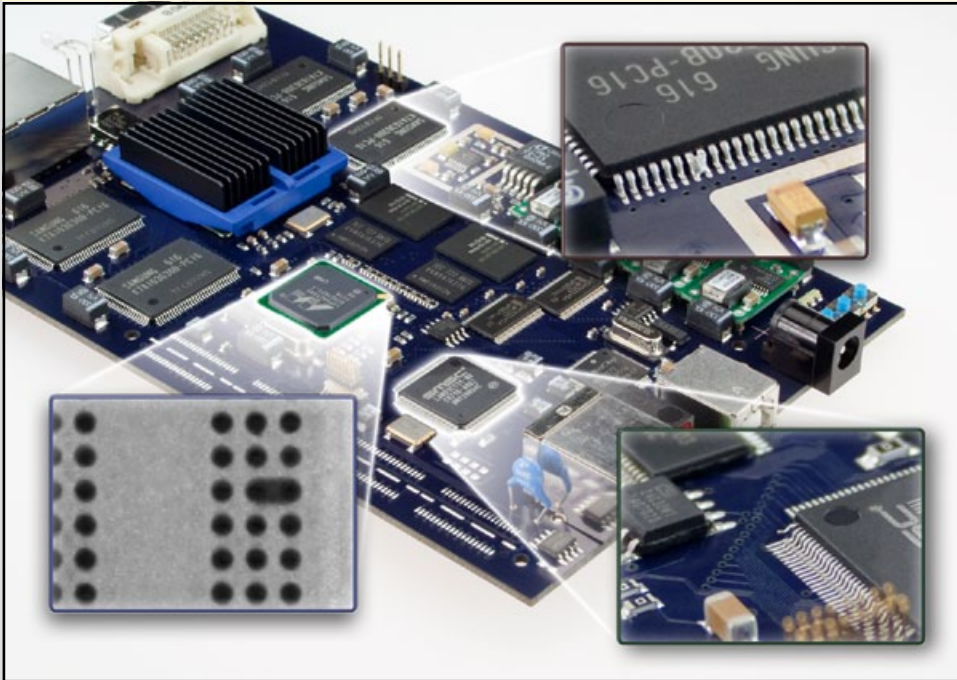
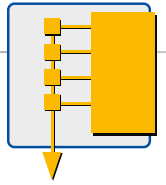


Simple Test of Complex Things

Production-Oriented Assembly and System Test



Reduce your costs!

Accelerate the development of new products!

Increase your fault coverage!

Improve the quality of your products!

How? – With JTAG/Boundary Scan!

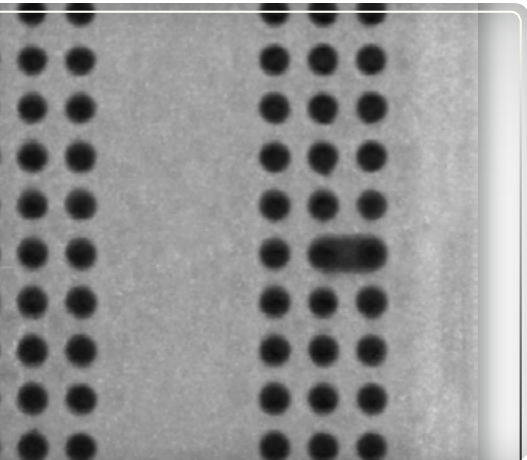
Assure your competitive advantage!

JTAG / Boundary Scan

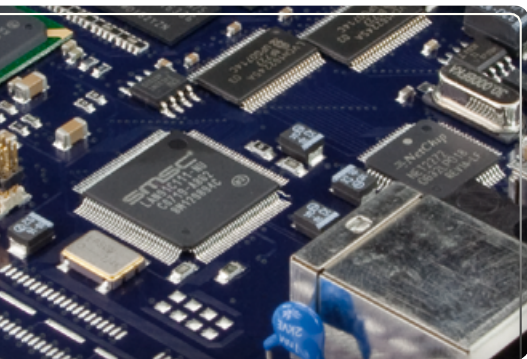
What is JTAG / Boundary Scan?



Production oriented test method



Fault detection also at hidden solder joints



Simple connection test also for complex ICs

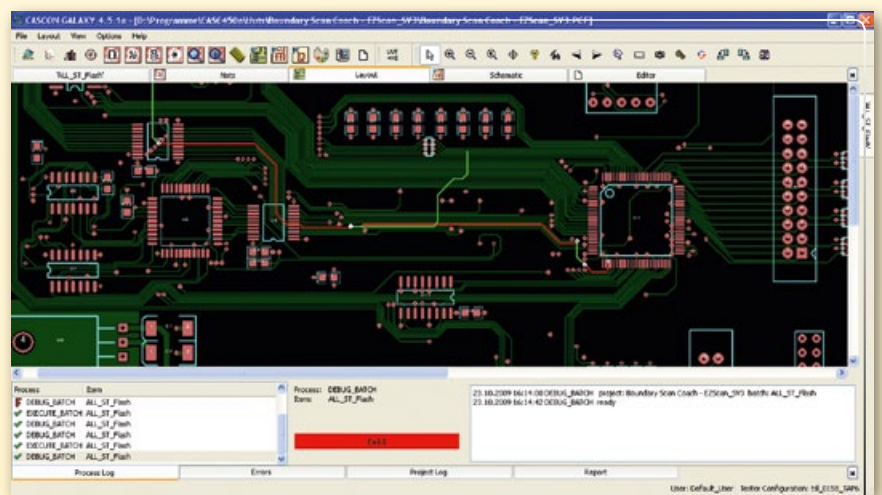
JTAG / Boundary Scan is possibly the most resourceful test technology which, similar to the In-Circuit Test (ICT) but without physical contact, detects the failure location and utilises thousands of virtual test points – if necessary even under BGAs. It needs only four lines and five important “design for testability” rules!

Unlike other methods JTAG / Boundary Scan can be utilised throughout the entire production process, and hence is an important part in the quality assurance of PCBs.

Please find additional information at www.goepel.com/bscan

Benefit from JTAG / Boundary Scan advantages:

- Standardised test technology since 1990
- One tool for testing and programming
- No expensive adaptation, i.e. cost savings for fixtures and storage
- Test access also for complex boards (e.g. with BGAs)
- Detailed and graphical fault analysis
- Opportunities for simple integration into existing test systems such as In-Circuit testers, flying probers, MDA, functional testers or automated inspection systems (AOI / AXI)
- Utilisable throughout the entire product life cycle



Graphical fault analysis

GOPEL
electronic
Get the total Coverage!

ISO 9001 certified

GOPEL electronic GmbH
••• Goeschwitzer Straße 58 / 60
07745 Jena / Germany
Tel: +49 (0) - 36 41 - 68 96 - 0
Fax: +49 (0) - 36 41 - 68 96 - 944
Email: sales@goepel.com
Internet: www.goepel.com

Authorised Distributor:

 sales@goepel.co.uk  sales@goepelusa.com  sales@goepel.asia  sales@goepel.fr