



Net2Run & Series 62

Toolchain for simulation and residual bus and test solutions



- Multibus Controller for LIN/CAN/CAN FD/CAN XL/FlexRay/Automotive Ethernet
- available in various form factors and performance classes:
 - G PCIe 6281: PCIe card with max. 8 independent bus interfaces*
 - G PXIe 6281: PXIe card with max. 8 independent bus interfaces*
 - G CAR 6281: Stand-alone box with max. 8 independent bus interfaces*
 - G CAR 6282: Stand-alone box with max. 18 independent bus interfaces*
- additional digital and analog I/O channels as well as SENT interface
- versatile configurability and thus ideally suited for residual bus simulations and the testing of ECUs
- use for high-performance flashing of ECUs
- possibility of executing user programs directly on the hardware
- provision of transport and diagnostic protocols, network management, XCP, SecOC etc. directly on the hardware
- Net2Run as a residual bus configuration tool



Technical Parameters	
Power input	G PCIe/G PXle/G CAR 6281: 8–12 W
	G CAR 6282: 10–24 W
Housing dimensions without connector (L x W x H)	G CAR 6281: 185 mm x 111 mm x 50 mm
	G CAR 6282: 221 mm x 172 mm x 64 mm
Operating temperature	G CAR 6281/G CAR 6282: 0–50 °C
Supply voltage	G CAR 6281: 8–14 V
	G CAR 6282: 12–30 V

Application

- simulation of complex, heterogeneous vehicle networks and gateways
- high-performance flashing of control units

Performance

- use of state-of-the-art technologies (MPSoC)
- IP-based communication controllers
- use of a real-time operating system
- optional: execution of user code directly on the hardware

Onboard logs

- transport and diagnostic protocols
- network management
- XCP
- SecOC
- SOME/IP
- a. o.

Modularity

- flexibly configurable according to the requirements of the test item
- scalable
- upgrade of units already in the field possible without problems

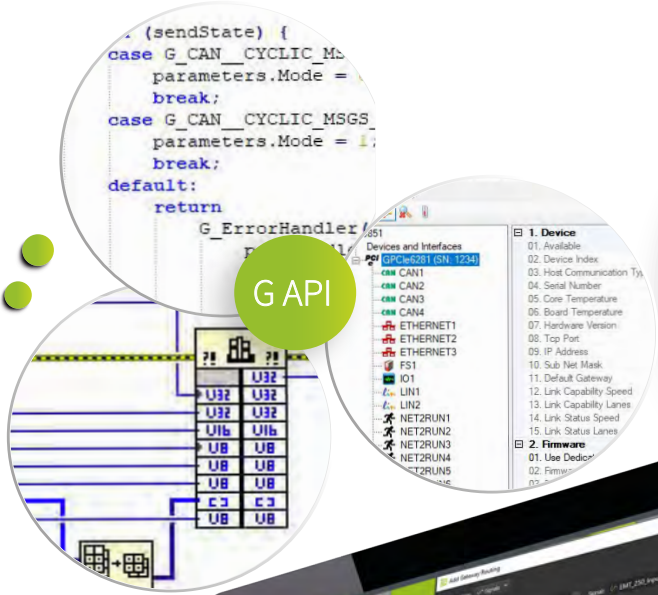


Application connectors

G PCIe 6281	G PXle 6281	G CAR 6281
4 x RJ.5 1 x RJ.45	4 x RJ.5 1 x RJ.45 1 x Molex iGrid 501876-1040	4 x RJ.5 1 x Molex iGrid 501876-1040

Connection variants G CAR 6282

G CAR 6282 with ODU-Mac 120 pin central connector	G CAR 6282 with single plugs



G API

Net2Run

- user software
- the efficient solution for creating complex signal-based residual bus simulations for heterogeneous vehicle networks



Property Viewer

Project Explorer

Signal Viewer



Modularity

- clear separation of GUI and function logic
- GUI-less variant available
- easy update of the data definition

Supported formats





- AUTOSAR arxml
- Format 3.x
- Format 4.x

Support of special signals*

- Digital I/O
- Analog In
- PWM
- SENT
- a. o.

* the available special signals vary depending on the module

Configuration possibilities

G PXIe 6281	G PCIe 6281	G CAR 6281	G CAR 6282
			
Article number: 2055-000	Article number: 2055-100	Article number: 2055-200	Article number: 2055-300
Type and maximum number of available communication interfaces per unit*			
8 of which max.	8 of which max.	8 of which max.	18 of which max.
CAN FD 8	CAN FD 8	CAN FD 8	CAN FD 12
LIN 8	LIN 8	LIN 8	LIN 12
FlexRay 2	FlexRay 2	FlexRay 2	FlexRay 2
Automotive Ethernet 2	Automotive Ethernet 2	Automotive Ethernet 2	Automotive Ethernet 2
Maximum number of additional IO resources			
Digital In 4	Digital In 4	Digital In 4	Digital In 16**
Digital Out 4	Digital Out 4	Digital Out 4	Digital Out 16**
Analog In 0	Analog In 0	Analog In 0	Analog In 8**
Analog Out 0	Analog Out 0	Analog Out 0	Analog Out 8**

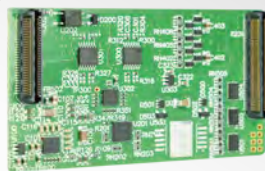
* For technical reasons, not any mixed configuration of communication interfaces is possible.

** via optional I/O modul

Accessories



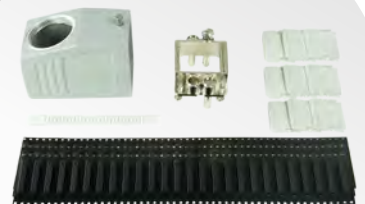
Transceiver module Automotive Ethernet, LIN, CAN FD, FlexRay



A/D IO module for GCAR 6282



RJ5 on 2x D-Sub9 cable



ODU connector kit for GCAR 6282

